

GOOSENECK & RV TOWING BY CURT™¹ GROUP



GOOSENECK TOWING

They've made the truck that turns the world under its tires and the trailer built to move mountains in a day, but what about the hitch powerful enough to make the connection?



Under-bed designs for minimal truck bed interference



Custom installation kits are made for a vehicle-specific fit



All gooseneck hitch installation kits are made in the USA



Thoroughly tested to SAE J2638 protocol for safety



5th-wheel hitches mount directly into the truck bed

16k
GTW

20k
GTW

25k
GTW

Capacities offered in 16,000, 20,000 and 25,000 lbs.²

FOR THE COMPLETE LIST OF CHEVROLET ACCESSORIES, SEE YOUR DEALER OR VISIT CHEVROLET.COM/ACCESSORIES.

GM reserves the right to make changes at any time, without notice, in prices, colors, materials, equipment, features, specifications, models, accessories and availability.

Some vehicles are shown with equipment from an independent supplier. GM Licensed and Associated Accessories are covered under the accessory-specific manufacturer's warranty and are not warranted by GM or its dealers. GM is not responsible for the safety or quality of independent supplier alterations.

¹ Non-GM warranty. Limited warranty by CURT™ Group, 10 years. For more information, contact your dealer.

² Towing capacity is based on manufacturer specifications and assumed properly equipped base vehicle. Consult your Chevrolet Dealer for details. Maximum trailer weight ratings are calculated assuming a base vehicle, except for any options necessary to achieve the rating, plus driver. The weight of other optional equipment, passenger and cargo will reduce the maximum trailer weight your vehicle can tow.

November 2017



ACCESSORIES

DOUBLE LOCK GOOSENECK HITCH, INSTALLATION KIT AND WIRING HARNESS KIT

30k
GTW



CURT™ Group Double Lock EZr™ Gooseneck Hitch



Retainer clips secure the bolts supporting the center section while attaching an installation kit



Exclusive center locator saves time



Simply drill up from under the bed



Use the pilot hole for error-free drilling



Ball up, ready for coupling



Ball stored, without rubber cover



Ball protected with included cover

EXCLUSIVE CENTER LOCATOR

- Eliminates the need to measure where the ball hole should be
- Eliminates errors caused by drilling
- Orange shavings indicate when to stop drilling the trailer ball hole
- Patent# D685,299 S

OPTIMUM STRENGTH

- Designed to manufacturer's² recommended towing capacity. Never exceed vehicle's max Gross Trailer Weight (GTW)
- Strong, spring-loaded 5/8" safety chain loops and Grade 8 hardware
- Fortified center section
- Meets SAE J2638 testing protocol

EZR™ INSTALLATION KITS

- No measuring required – safety chain loop holes are drilled from the underside of the truck bed
- Designed for fast, easy installation
- No need to lower exhaust
- Uses carriage bolts when possible so only one wrench is needed
- Eliminates sheet metal cutting along inside of fender to insert rails

ONE-PERSON INSTALLATION

- Retainer clips secure the bolts to support the center section while attaching the installation kit

FLIP-OVER BALL

- Flip-and-store ball helps avoid trailer ball loss and keeps truck bed free of obstruction
- Chrome trim ring for a finished look
- Rubber trim and hole cover provide protection and prevent corrosion

STURDY HANDLE

- Heavy-duty 3/8" diameter handle for solid operation

DOUBLE LOCK SECURITY

- Heavy-duty 3/8" diameter handle for solid operation
- Double-locking pins in trailer ball provide peace of mind

INCLUDED PARTS

- Rated to vehicle's max gross weight rating (GWR)³
- Designed for faster, easier installation
- Laser-cut for precise fit
- Routes a 7-way RV blade socket into truck bed while retaining use of 7-way RV blade at rear of vehicle



Installation subkit



7-way electrical wiring extension also available individually, see page 3

PART #	DESCRIPTION	BALL SIZE	EZr™ RATING	MSRP ²	INSTALL TIME
19353984	Double Lock EZr™ Gooseneck Hitch Kit ¹ Includes EZr™ gooseneck hitch center section, installation subkit and 7-way electrical wiring extension. Subkit fits Silverado 2500HD and 3500HD from 2011 to 2018. No drilling required.	2 5/16"	Manufacturer's recommended towing capacity ³	\$499	2.5 hr

¹ Non-GM warranty. Limited warranty by CURT™ Group, 10 years. For more information, contact your dealer.

² Manufacturer's Suggested Retail Price. Tax and installation extra. See dealer for details.

³ Towing capacity is based on manufacturer specifications and assumed properly equipped base vehicle. Consult your Chevrolet Dealer for details. Maximum trailer weight ratings are calculated assuming a base vehicle, except for any options necessary to achieve the rating, plus driver. The weight of other optional equipment, passenger and cargo will reduce the maximum trailer weight your vehicle can tow.

OEM PUCK SYSTEM 5TH-WHEEL HITCH KITS

20k
GTW

Q20 HITCH²

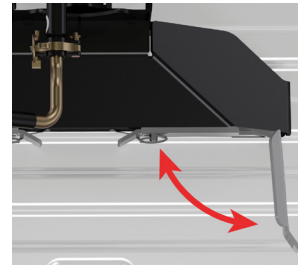


25k
GTW

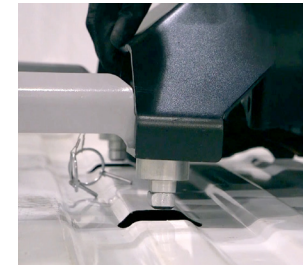
Q25 HITCH²



- Converts any CURT™ Group¹ 5th-wheel hitch head to fit Chevrolet OEM under-bed hitch platform
- Quarter-turn anchoring system for quick installation and removal
- Anchors can be adjusted to eliminate chucking between the legs and under-bed rails
- Durable carbide powder coat finish
- Capacity limited to lowest-rated towing component²
- Limited lifetime warranty



Quarter-turn anchor system is easy to install and remove



Drop the legs into the truck bed's anchoring system



Close the anchor levers to lock the legs into place

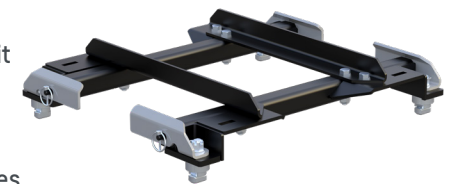
GM OEM PUCK SYSTEM 5TH-WHEEL LEGS



PART #	DESCRIPTION	MSRP ³	INSTALL TIME
19352638	Q20 5th-wheel with direct mount OEM puck system legs. Includes Q20 5th-wheel hitch head and Chevrolet OEM puck system legs. Fits 2016 to 2018 Silverado 2500HD and 3500HD. No drilling required	\$939	0.5 hr
19352639	Q25 5th-wheel with direct mount OEM puck system legs. Includes Q25 5th-wheel hitch head and Chevrolet OEM puck system legs. Fits 2016 to 2018 Silverado 2500HD and 3500HD. No drilling required	\$999	0.5 hr
19368492	5th Wheel OEM Puck Legs. Fits 2016 to 2018 Silverado 2500HD and 3500HD	\$369	0.25 hr

OEM PUCK SYSTEM ROLLER ADAPTER

- Adapts a CURT™ Group¹ 5th-wheel roller to fit the Chevrolet puck system
- Quarter-turn anchors provide quick installation and removal
- Adjustable anchors eliminate chucking noises



PART #	DESCRIPTION	MSRP ³	INSTALL TIME
19355905	Adapter plate for 5th-wheel roller	\$429	0.25 hr

¹ Non-GM warranty. Limited warranty by CURT™ Group, 10 years. For more information, contact your dealer.

² Towing capacity is based on manufacturer specifications and assumed properly equipped base vehicle. Consult your Chevrolet Dealer for details. Maximum trailer weight ratings are calculated assuming a base vehicle, except for any options necessary to achieve the rating, plus driver. The weight of other optional equipment, passenger and cargo will reduce the maximum trailer weight your vehicle can tow.

³ Manufacturer's Suggested Retail Price. Tax and installation extra. See dealer for details.

5TH-WHEEL HITCHES & KITS

5TH-WHEEL HITCH

PART #	DESCRIPTION	MSRP ¹	INSTALL TIME
19330275	Q20 5th-wheel hitch with standard legs ^{2,3} . Fits 2011-2018 Silverado 2500HD and 3500HD	\$630	0.25 hr

5TH-WHEEL HITCH KITS

PART #	DESCRIPTION	MSRP ¹	INSTALL TIME
19354323	A16 5th-wheel hitch with standard legs ^{2,3} . Includes base rails, installation kit and 7-way electrical wiring extension. Installation brackets fit Silverado 1500 from 2011 to 2018. No drilling required	\$949	2.0 hr
19353369	Q20 5th-wheel hitch with standard legs ^{2,3} . Includes base rails, installation kit and 7-way electrical wiring extension. Installation brackets fit Silverado 2500HD and 3500HD from 2011 to 2018. No drilling required	\$1,079	2.0 hr
19353370	Q20 5th-wheel hitch with R20 roller unit ^{2,3} . Includes base rails, installation kit and 7-way electrical wiring extension. Installation brackets fit Silverado 2500HD and 3500HD from 2011 to 2018. No drilling required	\$1,539	2.0 hr
19353371	Q25 5th-wheel hitch with standard legs ^{2,3} . Includes base rails, installation kit and 7-way electrical wiring extension. Installation brackets fit Silverado 2500HD and 3500HD from 2011 to 2018. No drilling required	\$1,099	2.0 hr

A-SERIES KEY FEATURES

- Cast yoke with poly-torsion inserts to suppress shock loads and noise
- Fully articulating torsion head for controlled coupling and a quiet ride
- Lockable handle self-resets to the ready-to-couple position
- High-strength, interlocking cast jaws fully wrap the kingpin to reduce noise
- Fast, one-pin head removal makes moving the hitch easy
- Limited lifetime warranty²

Q-SERIES KEY FEATURES

- Spherical axial bearing ensures smooth, quiet towing and allows for unimpeded head movement
- Dual jaws provide 360° kingpin contact
- Lockable, short-throw, single-handle operation
- 10-year limited warranty²

ROLLER KEY FEATURES

- True rolling unit – not just a slider
- 12" travel – most competitive models only offer 10"
- 10-year limited warranty²

¹ Manufacturer's Suggested Retail Price. Tax and installation extra. See dealer for details.

²  Non-GM warranty. Limited warranty by CURT™ Group, 10 years. For more information, contact your dealer.

³ Towing capacity is based on manufacturer specifications and assumed properly equipped base vehicle. Consult your Chevrolet Dealer for details. Maximum trailer weight ratings are calculated assuming a base vehicle, except for any options necessary to achieve the rating, plus driver. The weight of other optional equipment, passenger and cargo will reduce the maximum trailer weight your vehicle can tow.

16K A16 HITCH³

GTW



25K Q25 HITCH³

GTW



20K Q20 HITCH³

GTW



20K Q20 HITCH AND ROLLER³

GTW



INCLUDED PARTS

- Adds an additional 7-way RV blade socket to the truck bed while retaining use of the existing 7-way RV blade socket. Makes the electrical connections of gooseneck and 5th-wheel trailers easy by plugging into the factory harness. Right-angle plug for easy installation. Also available separately
- Base rails can be used with all CURT™ Group² 5th wheels and rollers
- Custom installation brackets reduce or eliminates drilling, which can cut installation times in half



Included but also available separately: 7-way electrical wiring extension, P/N 19352640. MSRP: \$69. Install time: 0.5-1.0 hr.



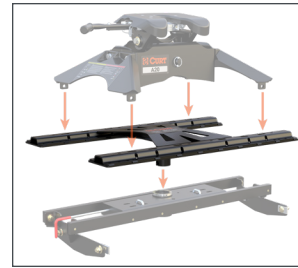
Base rails shown attached to installation brackets

X5 GOOSENECK TO 5TH-WHEEL ADAPTER PLATE

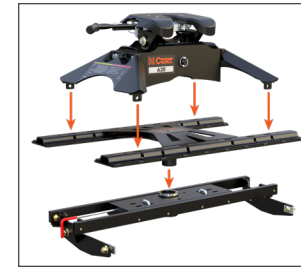
- Converts Double Lock and competitive gooseneck hitches to 5th-wheel rails
- For use with CURT™ Group¹ and other common 5th-wheel hitches up to 20,000 lbs?



20k
GTW



Replaces Double Lock trailer ball



Quickly provides 5th-wheel rails



Accepts 5th-wheel hitches and rollers

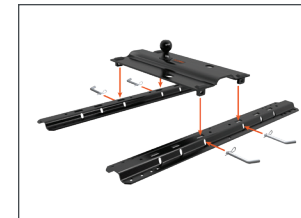
PART #	SHANK STYLE	FITS	MSRP ²	INSTALL TIME
19330276	Round Shank	CURT™ Group ¹ EZr™ 60611, 60612, 60619. Fits 2011-18 Silverado 2500HD and 3500HD	\$450	0.25 hr

5TH-WHEEL RAIL BENT PLATE GOOSENECK HITCH

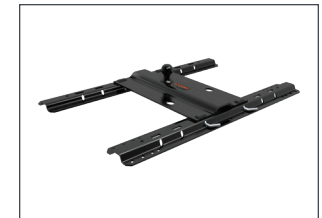
- 4-pin installation and removal for easy access to truck bed
- Bent plate includes pins and clips, safety chain hookups and welded trailer ball with 3" offset from front to rear
- Mounts to all industry-standard 5th-wheel rails



25k
GTW



Attaches to 5th-wheel rails



Bent plate provides 3" offset

PART #	BALL SIZE	BALL OFFSET	FITS	FINISH	GTW ²	MSRP ²	INSTALL TIME
19328695	2 5/16"	3"	Fits 2011-18 Silverado 2500HD and 3500HD	Carbide	25,000 lbs.	\$149	0.2 hr

CUSTOM BRACKETS AND BASE RAILS KIT

- Base rails can be used with all CURT™ Group¹ 5th-wheels and rollers
- Custom installation brackets reduce or eliminates drilling, which can cut installation times in half
- Routes a 7-way RV blade socket into truck bed while retaining use of 7-way RV blade at rear of vehicle

PART #	DESCRIPTION	MSRP ²	INSTALL TIME
19353372	2011-18 Silverado 2500HD/3500HD base rails kit. Includes base rails, custom brackets and 7-way electrical wiring extension	\$299	1.4 hr

INCLUDED PARTS

- Adds an additional 7-way RV blade socket to the truck bed while retaining use of the existing 7-way RV blade socket. Makes the electrical connections of gooseneck and 5th-wheel trailers easy by plugging into the factory harness. Right-angle plug for easy installation. Also available separately
- Base rails can be used with all CURT™ Group² 5th wheels and rollers
- Custom installation brackets reduce or eliminates drilling, which can cut installation times in half



Included but also available separately: 7-way electrical wiring extension, P/N 19352640. MSRP²: \$69. Install time: 0.5-1.0 hr.



Base rails shown attached to installation brackets

¹ Non-GM warranty. Limited warranty by CURT™ Group, 10 years. For more information, contact your dealer.

² Manufacturer's Suggested Retail Price. Tax and installation extra. See dealer for details.

³ Towing capacity is based on manufacturer specifications and assumed properly equipped base vehicle. Consult your Chevrolet Dealer for details. Maximum trailer weight ratings are calculated assuming a base vehicle, except for any options necessary to achieve the rating, plus driver. The weight of other optional equipment, passenger and cargo will reduce the maximum trailer weight your vehicle can tow.

EXTENDED VIEW TOW MIRROR

- Fully adjustable, can be used horizontally or vertically
- Fits left or right mirrors on 2013-14MY Silverado 2500HD/3500HD

PART #	MIRROR DIMENSIONS	FITS	MSRP ²	INSTALL TIME
19302668	7 1/2" x 5"	2013-14 Silverado 2500HD/3500HD	\$22	0.1 hr



Front



Back

TRIFLEX™ BRAKE CONTROL AND HARNESS KITS

- Triple-axis, motion-sensing accelerometer for highly responsive, smooth stops
- Third axis provides precise, dynamic brake power adjustment when going up or down an incline
- Nine levels of sensitivity adjustment for varying trailer loads or driving conditions
- Digital display shows power adjustments in 0.1 increments
- Operates 2-8 brakes (1-4 axles)
- User-selectable options on manual activation:
 - Power output (100% or limited to preset power)
 - Trailer brake light activation
- Compatible with low voltage or pulse-width modulation (PWM) systems
- Compact size: 3 1/4" wide, 4" deep, 7/8" tall
- Mounts in a variety of angles above or below the dash to increase unit accessibility and display readability
- Automatic leveling and calibration
- Mounting hardware included



TriFlex™ brake control



Harness included with 19330662



Harness included with 19330154

BRAKE CONTROL HARNESS FEATURES

- Quick plug harness installs in less than 10 minutes
- Wire colors match standard brake control harnesses

PART #	FITS	INCLUDES	MSRP ²	INSTALL TIME
19330154	2014 Silverado 1500, 2015-18 Silverado 1500/2500HD/3500HD, Tahoe and Suburban	TriFlex™ brake control unit and brake control harness	\$95	0.5 hr
19330662	2015-18 Colorado	TriFlex™ brake control unit and splice-in quick plug with 24" pigtails	\$95	0.75 hr



4.0

Your power adjustment setting



4.0 ▶ 3.2

Automatic adaptive power output values



4.0 ▶ 5.3

Automatic adaptive power output values

Note: Values represented are for illustration only. The actual preset and adaptive values may differ from those shown here.

¹ Non-GM warranty. Limited warranty by CURT™ Group, 10 years. For more information, contact your dealer.

² Manufacturer's Suggested Retail Price. Tax and installation extra. See dealer for details.